

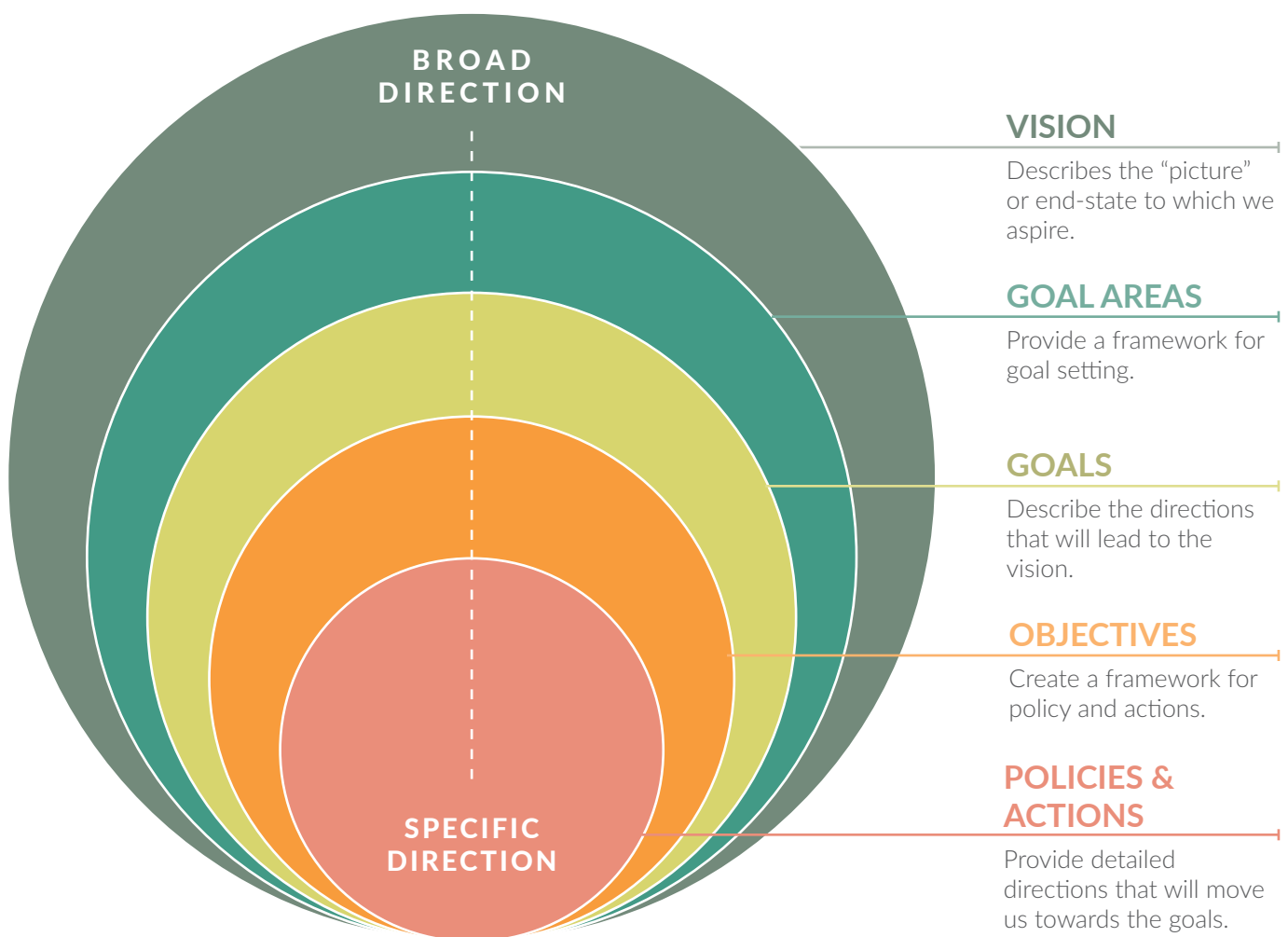


PART 2 OUR VISION FORWARD

The vision and goals represent the ideas, insight and values of more than a thousand Sooke residents who took part in the Picture Sooke engagement process. The vision acts as a North Star: it describes the future state of our community that we should be working towards through every decision we make. The goals are more tangible in that they describe the directions that will lead to the vision.

2.1 OCP POLICY STRUCTURE

The OCP's policy and actions are the roadmap for bringing the community vision to reality. The OCP's policy structure reflects a hierarchy that increases in specificity, from the broad community vision, to goal areas, goals, and objectives. This structure ensures that directions of the OCP are actionable today, while ultimately being tied to the Sooke we envision in 2050.



OCP VISION

Sooke is a small town with a big heart. It is a vibrant net-zero emissions community, cradled in the stunning beauty and vitality of the ocean and forest.

Located in the beautiful lands that have been home to the T'Sou-ke Nation and Sc'ianew First Nations since Time Immemorial, Sooke is known for its active waterfront and protected ecosystems and farmland.

Its Town Centre is the hub of public life, defined by a distinct west coast character. Sooke offers exceptional amenities, housing choices, diverse employment, and a dynamic arts and culture scene. It is a caring community where people and the environment are treated with dignity and respect.

The OCP vision and goals embody the values, priorities, and aspirations of the community based on extensive input provided by more than a thousand residents. All of the policies, guidelines, and actions in this OCP were developed to bring to life this vision, and these goals and objectives.

2.2 JOURNEY TO A NET-ZERO EMISSIONS COMMUNITY

Achieving our vision

Currently, human activity in urban areas is responsible for 70% of global greenhouse gas emissions. This means that municipalities have an important role to play in controlling or influencing emissions production. Globally, municipalities are enacting policy to reduce emissions within their borders, contributing to the worldwide action required to avoid climate catastrophe. As described in Part 3, the District of Sooke has committed to achieving net-zero greenhouse gas emissions by 2050.

Strategies for delivering our vision of a **net-zero emissions** community are integrated throughout this OCP in its policies and guidelines. A starting place for creating those strategies is benchmarking our status at the time of creating this OCP.

Using the internationally recognized Global Protocol for Cities (GPC) framework, the Capital Regional District (CRD) has facilitated the delivery of BASIC+ greenhouse gas inventories, which provide the basis for trending GHG emissions in Sooke and the Capital Region. These inventories represent the best available information and improve upon previous Community Energy and Emissions Inventories conducted by the Province of BC.

Figure 4 outlines Sooke's greenhouse gas emissions profile for 2022, however it should be noted that this figure does not include emissions sequestered by various land use types¹.

¹ Greenhouse gas reduction targets are required by the Province of British Columbia to be included in every community's OCP. Source: <https://www2.gov.bc.ca/gov/content/governments/local-governments/planning-land-use/local-government-planning/official-community-plans>

*Industrial Process & Product Use accounted for approximately 52% of Sooke's 2022 greenhouse gas emissions.**

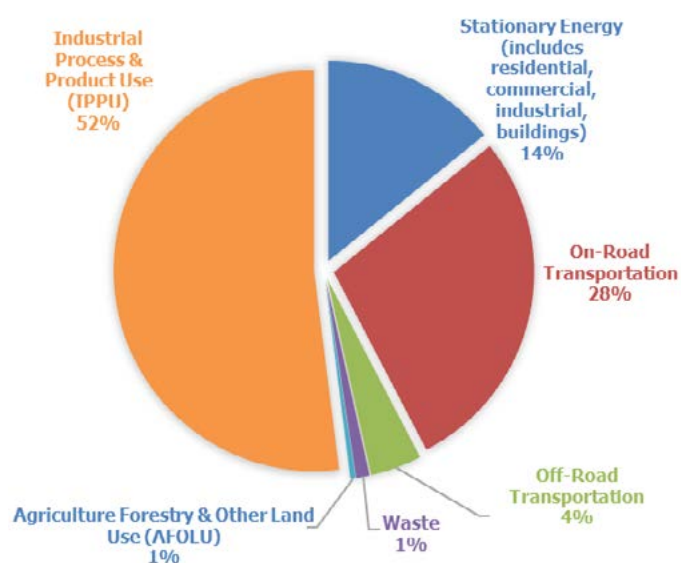


Figure 4. Sooke's 2022 BASIC+ GHG Emissions Profile (Excluding Land-Use)

Source: Capital Regional District – Municipalities and Electoral Areas Report – 2007 Base Year and 2022 Reporting Year Energy & GHG Emissions Inventory.

*Industrial Process and Product Use emissions are the byproduct of industrial activities and manufacturing. These emissions can also be the result of solvent use and refrigerant release from air conditioning systems, for example.

What is Net-zero?

Net-zero is the target of completely negating the amount of greenhouse gases (GHGs) produced by activity by reducing greenhouse gas emissions and absorbing remaining GHGs from the atmosphere in oceans, forests, soils, and other **carbon sinks**.

There is international scientific consensus that greenhouse gas emissions must be reduced to zero by 2050 at the latest in order to stabilize global temperatures and avoid catastrophic climate change impacts. Canada committed to this target in the 2015 Paris Agreement, which is a legally binding international treaty on GHG reductions.

25-Year Greenhouse Gas (GHG) Emissions Reduction Targets

The ability of Sooke to meet its **net-zero emissions** target by 2050 hinges on significant efforts and GHG reductions between now and then. In order to meet the 2050 target and follow the District's Climate Action Plan, the District of Sooke commits to the following 25-year GHG reduction targets:

Target Year	2030	2050
Total tCO ₂ e	28,651	0
tCO ₂ e Reduced from 2018	-28,651	-57,302
Percentage emissions reduction from 2007	50%	100%

The 50% emissions reductions by 2030 intensifies the targets set in the 2022 Official Community Plan of 40-50% from 2007 levels of GHG emissions. . The policies, actions, and guidelines required to achieve these targets are integrated throughout this OCP and viewable in the District's Climate Action Plan.

Linking Targets with Actions and Policies

In order to meet GHG emissions reduction targets, actions and policies were developed and integrated throughout this OCP. Capital Regional District (CRD) emissions data were used to provide 2007 base-year GHG emissions data, which establish a reference point for emissions reductions targets by 2030 and 2050.

Accommodating assumptions about population, employment, and housing growth over the next 30 years, as well as trends and OCP direction for factors like building types, the BC Energy Step Code for building energy efficiency, and market outlooks for electric vehicle uptake and energy technologies (e.g. heat pumps), OCP emissions reduction actions and policies were developed for each emissions sector. Emissions sectors include: buildings, transportation, energy generation, industrial processes, agricultural activities, and waste and wastewater. Emissions from activities occurring within Sooke's municipal boundary were considered.

Policies and actions contained primarily in the following chapters were developed to meet the OCP emissions reductions for each sector:

Emissions Sector	OCP Chapter
Buildings	Growth Management, Land Use, Green Building, Housing
Transportation	Growth Management, Land Use, Transportation, Infrastructure, Parks and Trails
Energy Generation	Green Building, Infrastructure
Industrial Processes	Community Economic Development
Agriculture	Growth Management, Land Use (Agriculture)
Waste and Wastewater	Growth Management, Infrastructure

As noted previously, the combination of emissions reduction actions aim to achieve 50% emissions reduction by 2030 compared to 2018 levels and 100% emissions reduction by 2050 (net-zero). The calculation of the impacts of these actions benefited from modeling performed in other communities in BC of similar size and context to Sooke.

The remaining emissions in 2050 after OCP emissions reduction actions can be addressed through additional actions, primarily in the agricultural and solid waste diversion and treatment sectors through further collaboration with industry and government.

Alignment with Sooke’s Climate Action Plan

The Official Community Plan (OCP) is developed in coordination with the District’s Climate Action Plan (CAP) to ensure consistency in climate-related goals, policies, and actions. While the OCP establishes a long-term vision and land use framework for sustainable growth, the CAP provides a detailed roadmap for reducing greenhouse gas (GHG) emissions and enhancing climate **resilience**. The two documents are intended to be complementary: where the CAP identifies specific climate actions – such as accelerated Step Code adoption, transportation mode shifts, and energy retrofits – the OCP provides supportive land use, development, and policy guidance to enable implementation. Together, the OCP and CAP reflect an integrated approach to community planning and climate action, reinforcing a unified direction toward a low-carbon, resilient future.

2.3 GOALS

In accordance with the OCP policy structure outlined in Section 2.1, the following goal areas include several goals intended to achieve the overall vision for Sooke established in the OCP. Each goal area and associated goals are also included in the Community Policy section (Part 4) of the OCP. Each goal includes associated objectives which are supported by policies and actions to achieve their intent.

Goal Area 1: Green and Net-zero

1. Mobilize to address the climate emergency head-on; achieve a 50% reduction in greenhouse gas emissions (GHGs) by 2030 and net-zero GHGs by 2050.
2. Protect ecological areas for habitat and agricultural lands for farming, while focusing urban growth within the Town Centre.
3. Reduce car dependency and offer more transportation choices, with priority given to walking, cycling, transit use, and goods movement.
4. Create civic infrastructure and landscaping that is both high performing and delightful.
5. Expand and protect parks and green space throughout the community for the well-being of current and future generations.

Goal Area 2: Enjoyable and Distinct

1. Bolster streetscapes, homes and destinations in the Town Centre, the bustling heart of Sooke.
2. Protect and connect, physically and visibly, with the waterfront, the soul of Sooke.
3. Support and enjoy local food.
4. Treat streets as a place for people and public life.
5. Support existing local businesses, and encourage the establishment of new businesses and employment. Foster **community economic development** that respects ecological limits.
6. Elevate Sooke's dynamic arts and culture scene.

Goal Area 3: Equitable and Respectful

1. Commit to addressing the urgent need to respect and promote the inherent rights of Indigenous peoples, including their rights to the land, territories, and resources.
2. Provide housing choices for all.
3. Equally honour diverse identities and lived experiences – including those of equity-seeking people – in services, public spaces, and the built environment.
4. Create a safe and resilient community for all.

2.4 OBJECTIVES

The following tables summarize how the OCP's goal areas and goals are mobilized through the policy objectives. Many policy objectives correlate to more than one goal. The OCP land use directions in part 3 are not listed in this section as the land use directions are meant to be reflective of all the goal areas.

GOAL AREA ONE:

Green & Net-zero

GOALS

Mobilize to address the climate emergency head-on; achieve a 50% reduction in greenhouse gas emissions (GHGs) by 2030 and net-zero GHGs by 2050.

COMPLEMENTARY POLICY OBJECTIVES

- Minimize the climate impact of the transportation sector and support expansion of new mobility.
- Lead by demonstrating; achieve **net-zero emissions** for municipal buildings.
- Construct new buildings to **net-zero emissions** standards.
- Encourage upgrades to existing buildings to higher energy efficiency standards and low-carbon energy systems.
- Support and enable a sustainable Sooke food system that contributes to a **circular economy**.
- Encourage a diverse, thriving equitable local economy that respects ecological limits.
- Improve civic infrastructure and services that will attract, support, and maintain local economic activity.
- Strengthen economic development relationships and networks.
- Align economic activity with climate goals.

GOALS

COMPLEMENTARY POLICY OBJECTIVES

Protect ecological areas for habitat and agricultural lands for farming, while focusing urban growth within the Town Centre.

- Protect existing **sensitive ecosystems** and restore lost or degraded ecosystem functions.
- Proactively and responsibly manage Sooke's **ecological assets**, enhancing opportunities for connections to place.
- Protect food production lands.
- Support diverse housing types and offer new housing choices within already developed areas, while minimizing pressure on outlying ecological and agricultural areas.

Reduce car dependency and offer more transportation choices, with priority given to walking, cycling, transit use, and goods movement.

- Implement the District of Sooke Transportation Master Plan.
- Establish modal priority.
- Improve and expand transit service and infrastructure.
- Modernize approach to public and private parking.

Create civic infrastructure and landscaping that is both high performing and delightful.

- Use a holistic decision-making approach that accounts for full lifecycle costs when making infrastructure investments.
- Plan new infrastructure efficiently.
- Provide equitable access to Sooke's recreation and community facilities.
- Support partners to offer programming and services that enhance community well-being.

Expand and protect parks and green space throughout the community for the well-being of current and future generations.

- Implement the District of Sooke Parks and Trails Master Plan.
- Enable a diverse approach to park design.
- Provide equitable access to parks.

GOAL AREA TWO:

Enjoyable & Distinct

GOALS

COMPLEMENTARY POLICY OBJECTIVES

Bolster streetscapes, homes and destinations in the Town Centre, the bustling heart of Sooke.

- Minimize the climate impact of the transportation sector and support expansion of new mobility.
- Establish modal priority.
- Improve and expand transit service and infrastructure.
- Modernize approach to public and private parking.
- Support economic activities in appropriate locations.
- Support diverse housing types and offer new housing choices within already developed areas, while minimizing pressure on outlying ecological and agricultural areas.

Protect and connect, physically and visibly, with the waterfront, the soul of Sooke.

- Preserve and restore Sooke's Harbour and Basin for its environmental, traditional, cultural, spiritual, and recreational values.
- Implement the District of Sooke Parks and Trails Master Plan.
- Enable a diverse approach to park design.
- Provide equitable access to parks.

Support and enjoy local food.

- Support access to nutritious, locally produced, culturally appropriate, and planet-friendly foods.
 - Provide opportunities to experience or interact with growing, preparing, sharing, and celebrating food.
 - Enable agri-food system businesses to contribute significantly to the local economy.
-

GOALS

COMPLEMENTARY POLICY OBJECTIVES

Treat streets as a place for people and public life.

- Implement the District of Sooke Transportation Master Plan.
- Establish modal priority.
- Improve and expand transit service and infrastructure.
- Modernize approach to public and private parking.

Support existing local businesses, and encourage the establishment of new businesses and employment. Foster community economic development that respects ecological limits.

- Encourage a diverse, thriving and equitable local economy that respects ecological limits.
- Improve civic infrastructure and services that will attract, support, and maintain local economic activity.
- Strengthen economic development relationships and networks.
- Align economic activity with climate and equity goals.

Elevate Sooke's dynamic arts and culture scene.

- Leverage arts and culture in shaping Sooke's identity.
- Make space for arts and culture in the community.

GOAL AREA THREE:

Equitable & Respectful

GOALS

COMPLEMENTARY POLICY OBJECTIVES

Commit to addressing the urgent need to respect and promote the inherent right of Indigenous peoples including their rights to the land, territories, and resources.

- Work with Indigenous community members to support **food sovereignty**, and to protect and restore access to traditional foods and food harvesting.
- Honour and amplify Indigenous cultural knowledge and presence.
- Continue to strengthen relationships with T'Sou-ke Nation and other Indigenous communities through initiatives and processes to advance and support reconciliation.
- Apply an equity lens to planning decisions and resource allocation.
- Prioritize equity and representation in community participation processes

Provide housing choices for all.

- Address **non-market housing** needs.
 - Address market-rate housing needs.
 - Enhance supply of rental housing.
 - Enhance housing affordability.
 - Support family-friendly, accessible, and seniors housing.
-

GOALS

COMPLEMENTARY POLICY OBJECTIVES

Equally honour diverse identities and lived experiences – including those of equity-seeking people – in services, public spaces, and the built environment.

- Implement the District of Sooke Parks and Trails Master Plan.
- Enable a diverse approach to park design.
- Provide equitable access to parks.
- Encourage a diverse, thriving and equitable local economy that respects ecological limits.
- Improve civic infrastructure and services that will attract, support, and maintain local economic activity.
- Strengthen economic development relationships and networks.
- Align economic activity with climate and equity goals.
- Provide equitable access to Sooke's recreation and community facilities, and increase their capacity, quality, and diversity.
- Support partners to offer programming and services that enhance community well-being.
- Continue to strengthen relationships with T'Sou-ke Nation and other Indigenous communities through initiatives and processes to advance and support reconciliation.
- Apply an equity lens to planning decisions and resource allocation.
- Prioritize equity and representation in community participation processes

GOALS

COMPLEMENTARY POLICY OBJECTIVES

Create a safe and resilient community for all.

- Implement the District of Sooke Transportation Master Plan.
- Establish modal priority.
- Improve and expand transit service and infrastructure.
- Modernize approach to public and private parking.
- Improve the health of Sooke's air, water, and land.
- Prepare for the impacts of climate change.
- Implement the District of Sooke Parks and Trails Master Plan.
- Enable a diverse approach to park design.
- Provide equitable access to parks.
- Improve the **resilience** and sustainability of existing infrastructure.
- Provide equitable access to Sooke's recreation and community facilities, and increase their capacity, quality, and diversity.
- Support partners to offer programming and services that enhance community well-being.

